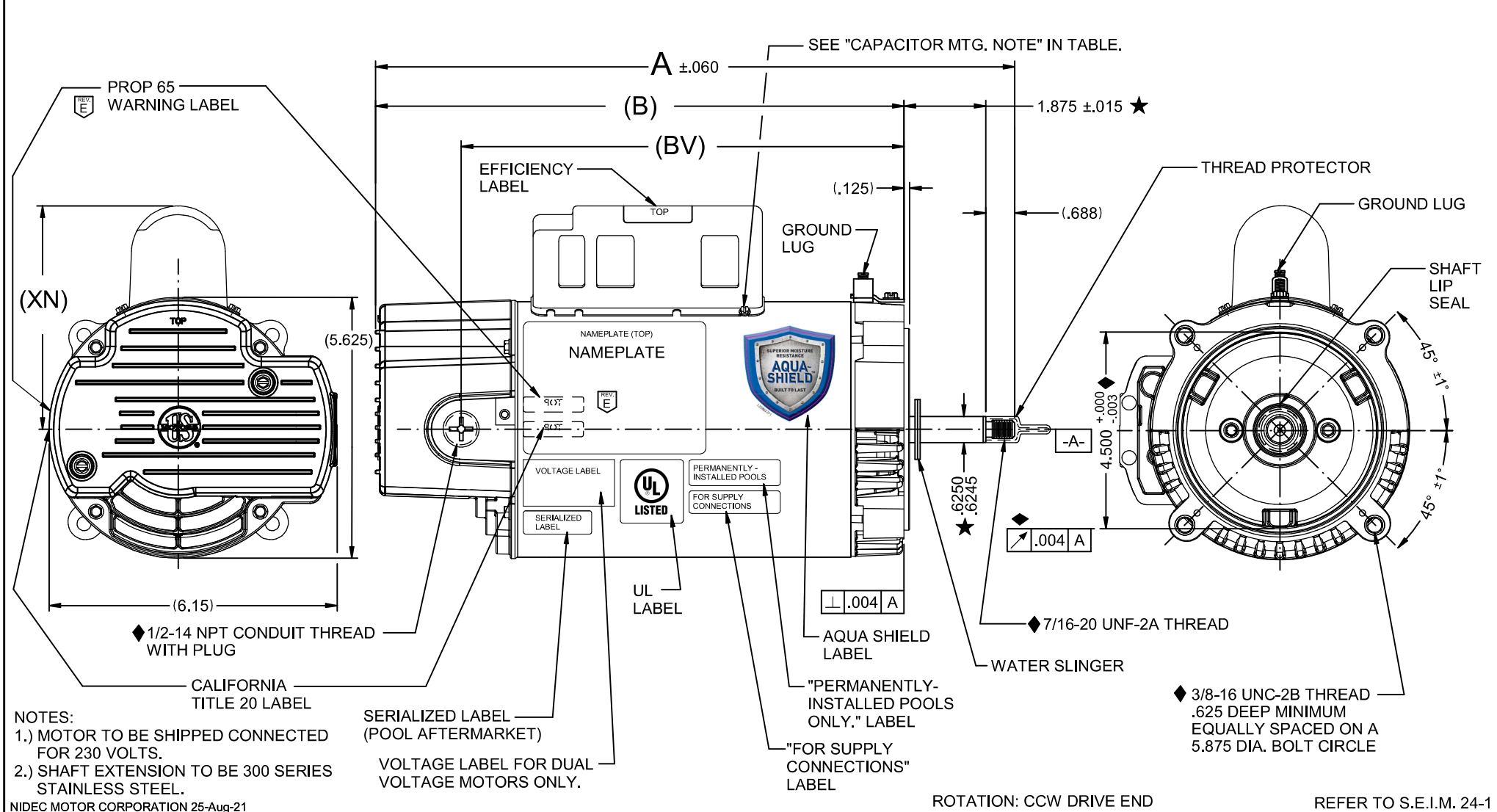




## Catalog #: AST225

Model_Number:	T055CRY1603013J
PRODUCT NAME:	2.25 HP - ODP - 3450
PHASETYPE:	1_CAPACITOR START -
MOTOR ENCLOSURE:	ODP
HORSEPOWER:	2.25
POLES:	2
NUMBER SPEEDS:	1
RPM:	3450
HERTZ:	60
VOLTS PRIMARY:	230/115 V
VOLTS :	230
VOLTS 2:	115
FRME :	56
SHAFT CODE:	J
STATOR DIAMETER:	5.5
STACK:	3.75
MOUNTING:	C-FACE
MOTOR TYPE:	FHP
OPPOSITE END BEARING:	6203
SHAFT END BEARING:	6203
AMBIENT:	50
ROTATION:	CCW DRIVE END
RUNCAPMFD:	50
RUNCAPVOLTS:	370
STARTCAPMFD:	374
SHIPPING WEIGHT:	27
THERMAL PROTECTION:	AUTOMATIC RESET
BREAKDOWN TORQUE:	117.6
BREAKDOWN TORQUE UOM:	OZFT
LOCKED ROTOR TORQUE:	70.05
LOCKED ROTOR TORQUE UOM:	OZFT
INSULATION CLASS:	B
KVA CODE LETTER:	G
LOCKED ROTOR AMPS:	52.33
FULL LOAD AMPS PRIMARY:	9.5/19.0

VAR	MODEL	CUSTOMER	CAT. NO.	A	B	BV	XN	XH	THP	VOLTS	AMPS	HZ	RPM	CALIFORNIA TITLE 20 LABEL	CAPACITOR MTG. NOTE
001	T55CXCRY-1603	POOL AFTERMARKET	AST225	15.64	13.08	11.11	5.01	N/A	2.25	230/115	9.5/19.0	60	3450	NON-COMPLIANT	2 CAPACITOR COVER MTG. SCREWS - SIDE MOUNT



ISSUED BY: <b>G. ISASSI</b>		ENGINEER APPROVED: <b>J. SCHRADER</b>		TOLERANCES ON DIMENSIONS (UNLESS OTHERWISE SPECIFIED)		<b>NIDEC MOTOR CORPORATION</b> INFORMATION DISCLOSED ON THIS DOCUMENT IS CONSIDERED PROPRIETARY AND SHALL NOT BE REPRODUCED OR DISCLOSED WITHOUT WRITTEN CONSENT OF NIDEC MOTOR CORPORATION				REVISION DATE:		
ADDED LABEL "PROP 65" AND CRITICAL REQ. # 7.		ECO E40553		INCHES .XX = ±.010 .XXX = ±.005						mm		31-AUG-21
				ANGLES X° = ±1°		TITLE		CODE	ITEM NO.	REV	SHEET NUMBER	DWG SIZE
						CUSTOMER DETAIL DRAWING		V02	817872	E	1 OF 6	B

# AQUA-SHIELD® EZ48® C-Flange Pool and Spa Motors

## Switch Design, 5.5" Frame Diameter, Threaded Shaft: Category "J"



### FEATURES:

- Two Compartment
- Triple Bearing Protection
- Thermally Protected
- 1081 Design
- Shaft Threads - 7/16-20 UNF-2A
- Class B Insulated
- Open Dripproof
- Continuous Duty
- 50°C Ambient
- 300 Series Stainless Steel Shaft
- Sealed Ball Bearings
- Voltage Selection Device (Dual Voltage Only)
- **Discount symbol: DS-FPS**



- Optimized internal airflow design minimizes heat and moisture buildup inside the motor
- Internal bearing cover protects the drive/pump end ball bearing from water and debris that may occur inside of the motor
- Three additional layers of drive/pump end bearing protection:
  - Double Sealed Ball Bearing
  - Lip Seal
  - Water Slinger

### Standard Efficient, Total Horsepower Rated



THP	RPM	Voltage	Freq	SF Amps	Catalog Number	Motor Frame	Length Less Shaft	Wgt.	List
0.95	3450	230/115	60	5.5/11.0	AST095	56J	11.25	16	\$236
1.25	3450	230/115	60	7.0/14.0	AST125	56J	12.25	21	\$263
1.65	3450	230/115	60	8.5/17.0	AST165	56J	12.75	24	\$301
2.75	3450	208-230	60	12.3-11.3	AST275*	56J	13.00	28.5	\$487

\* California Energy Commission (CEC) Appliance Regulations (Title 20) compliant  
 \*\* Contact dealer for full conditions of operation  
 Catalog numbers are for competitive comparison purposes only.

▲ High Efficiency, Capacitor Start/Run Design

† All marks shown within this document are properties of their respective owners.

BRAKEMOTORS  
 GENERAL PURPOSE SINGLE PHASE  
 HVAC  
 WASHDOWN  
 AGRICULTURE  
 COMMERCIAL PUMP MOTORS  
 CLOSE COUPLED PUMP MOTORS  
 FIRE PUMP MOTORS  
 POOL & SPA MOTORS  
 RESIDENTIAL WATER PUMP  
 ELEVATOR GATE & DOOR